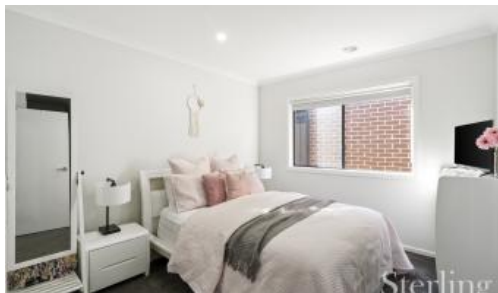


Sold

22 Goodison Grove, Mount Cottrell



When quality and comfort combine

Get ready to fall in love with this impeccably presented four-bedroom Escape Homes build! Completed in December 2022, and nestled in the popular Edgeleigh Estate - Mount Cottrell and only a stone's throw away from childcare facilities, this property features all the modern day comforts any family could ask for. This estate is on Leakes Road directly across from Tarneit.

Beautifully presented rendered front Façade, elevated ceilings and gorgeous hybrid floors greet you upon entry, allowing for a sense of quality and warmth. Immediately to the right of the entrance is the light filled formal lounge, perfect for relaxing nights on the couch with friends and family.

The wide hallway guides you through the clever floor plan towards the open-plan living space, which is headlined by the intelligently positioned kitchen setup. Well equipped with ample storage with soft closing drawers and overhead cupboards, custom tiled splashback, Caesar stone bench tops, 900mm stainless steel appliances, dishwasher and a large walk-in-pantry, the kitchen oversees both the family lounge and dining area.

Situated in the middle of the home is the master bedroom, complemented with a walk-in-robe and upscale en-suite including a larger shower. The remaining three bedrooms are positioned to the rear of the home and are accommodated

🏠 4 🛏 2 🚿 2 📏 350 m2

Price	SOLD for \$672,000
Property Type	Residential
Property ID	891
Land Area	350 m2
Floor Area	213 m2

Agent Details

Scott Perry - 0439 595 461

Danielle Ferguson - 0484 546 381

Office Details

Sterling Realty Pty Ltd

Unit 3 40B Wallace Ave Point Cook,
VIC, 3030 Australia

0439 595 461

Sterling
Realty

with mirrored built-in-robres, as well as a beautiful family bathroom and WC positioned in-between. The laundry with extra storage cupboards and glass sliding door, and linen cupboard are situated off the main hallway.

The outdoor alfresco area is also accessible from the main living space and is complete with both concrete areas and natural turf for the kids to play.

Extra features included with this delightful home are; double remote-controlled garage with internal and backyard access, LED down lights, feature pendant light fixtures over the island bench, split system cooling/heating, gas ducted heating and much more on a very tidy 350m2 (approx.) east facing allotment.

Combined with easy access to the Riverdale Village Shopping Centre, Tarneit Rise Primary School, Tarneit P-9 College, Tarneit Senior College and child care facilities, Tarneit West Railway station will be built in a few years and will be within walking distance, easy access to Melton and Eynesbury via Sewells Road, this truly is an amazing opportunity for any first home buyer or savvy investor!

Don't delay and enquire today!

To see a full list of our available house and land packages, please visit:

<https://www.sterlingrealty.com.au/house-and-land>

While the Information is considered to be true and correct at the date of publication, changes in circumstances after the time of publication may impact on the accuracy of the Information. The Information may change without notice and Sterling Realty Pty Ltd is not in any way liable for the accuracy of any information printed and stored or in any way interpreted and used by a user.

The above information provided has been furnished to us by the vendor/s. We have not verified whether or not that information is accurate and do not have any belief in one way or the other in its accuracy. We do not accept any responsibility to any person for its accuracy and do no more than pass it on. All interested parties should make and rely upon their own inquiries in order to determine whether or not this information is in fact accurate.