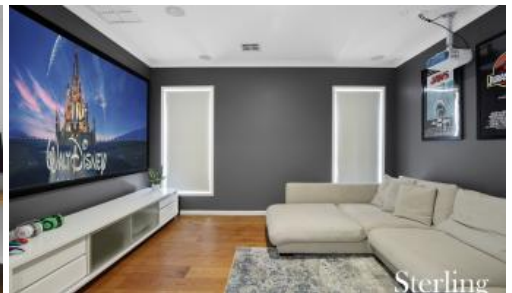
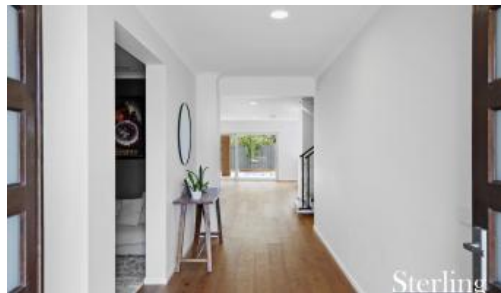




29 Statesman Way, Point Cook



Cutting Edge Design with Individuality and Style

Carefully engineered by Porter Davis Homes is this astonishing custom designed property located in the heart of Saltwater Coast and only moments away from the leisure centre and crocodile park. This sophisticated 40 SQ (approx.) five-bedroom + study family home is set on a 447m2 (approx.) allotment that offers city views. This stunning residence is a once in a lifetime opportunity not to be missed!

A glance of this palatial home instantly offers a taste of what is to come within 29 Statesman Way. Upon entry through the oversized Corinthian doors, you're greeted by a grand hallway and a beautifully hand-crafted staircase with glass balustrading. A visual that leaves you hungry to explore the rest of the home. The engineered European timber floorboards take you through to the home office located at the front of the property, offering fitted desks and convenience for professionals and adjacent to the study is a stunning home theatre for all the family to enjoy.

Proceeding through to the main living quarters at the rear of the home, a massive entertaining space reveals itself. The open plan design offers flexibility and an abundance of space for family living and dining, all overlooked by the stunning kitchen. To enhance the space, custom made large picture windows and custom-made stacker doors were installed allowing mountains of light to

5 2 2 447 m2

Price	SOLD for \$947,500
Property Type	Residential
Property ID	91
Land Area	447 m2
Floor Area	371.60 m2

Agent Details

Scott Perry - 0439 595 461

Danielle Ferguson - 0484 546 381

Office Details

Sterling Realty Pty Ltd

Unit 3 40B Wallace Ave Point Cook,
VIC, 3030 Australia

0439 595 461

Sterling
Realty

flood through.

At the heart of the home is the gorgeous kitchen with an enormous amount of bench space, perfect for the aspiring chef. Boasting 40mm marble-design Caesarstone bench tops, undermount sink and a waterfall finish to add a touch of elegance, it's clear that no expense was spared. Further to the list of features are 900mm stainless steel appliances, picture window splashback, floating range hood and under bench storage. If all that didn't already sound great, the kitchen also offers a huge Butler's pantry for extra storage and additional walk in pantry too.

The ideal setting for hosting all year-round is the grand alfresco. This space covered with travertine tiles graciously provides a covered entertaining area overlooking the half basketball court and gorgeous gas heated 8000 Litre salt chlorinated plunge pool which is surrounded by 2.1m merbau screening to make it your own private oasis.

The upper level of the home is where you'll find the master suite which is fit for a king and queen. Located towards the front of the home, featuring two custom built walk-in-robos, stone make-up desk and a massive en-suite with floor to ceiling Italian porcelain tiles, double vanity, rain-head double shower and an elegant free-standing bath. Surely, the master suite will not fail to impress. The remaining four bedrooms all offer large built-in-robos, one has a walk-in robe, two have custom built in desks and all are serviced by a grand family bathroom also with floor to ceiling porcelain tiles.

Other features of the home include: zoned ducted heating and evaporative cooling throughout, high quality window furnishings, downstairs powder room, laundry with exterior access, ample bench space, upstairs walk-in linen closet, square set cornicing, 2.74m ceilings downstairs, built in surround sound speakers, network wiring, remote timber look garage door and much much more

Set in Saltwater Coast you have plenty on offer. The Saltwater Coast Lifestyle Centre (with Pool, state of the art Gym equipment, Spa, Tennis Courts and Cafe), Tribeca Village, walking tracks, parks & wetlands along with Saltwater Sporting fields support all your family's sporting needs. The newly opened Saltwater P-9 school, St Mary's of the Cross Catholic school and Homestead Senior Secondary College are all just a short walk from this stunning home.

Only an inspection will truly showcase the level of style and quality this sublime family home has to offer, don't delay and enquire today!

While the Information is considered to be true and correct at the date of publication, changes in circumstances after the time of publication may impact on the accuracy of the Information. The Information may change without notice and Sterling Realty Pty Ltd is not in any way liable for the accuracy of any

information printed and stored or in any way interpreted and used by a user.

The above information provided has been furnished to us by the vendor/s. We have not verified whether or not that information is accurate and do not have any belief in one way or the other in its accuracy. We do not accept any responsibility to any person for its accuracy and do no more than pass it on. All interested parties should make and rely upon their own inquiries in order to determine whether or not this information is in fact accurate.